





# Introduction

Our Standards for pre-registration midwifery programmes set out the legal requirements, entry requirements and entry routes, length of programme, curriculum, practice learning, supervision and assessment and the qualification to be awarded for all pre-registration midwifery programmes.

Student midwives must successfully complete an NMC approved pre-registration midwifery programme in order to meet the *Standards of proficiency for midwives* and be eligible to apply for entry to the NMC register.

Better, safer care is central to our standards. Student midwives will be in contact with [people](#) throughout their education and it is important they learn in a safe and effective way.

These pre-registration midwifery programme standards should be read in conjunction with the *Standards framework for nursing and midwifery education* and the *Standards for student supervision and assessment*, which apply to all NMC approved education programmes. There must be compliance with all these standards for an education institution to be approved and to run any NMC approved pre-registration midwifery programme.

Education providers structure their education programmes to comply with our programme standards. They also design their curricula around the published proficiencies for a particular programme. Students are assessed against published proficiencies to ensure they are capable of providing safe and effective care. Proficiencies are the knowledge, skills and behaviours that nurses, midwives and nursing associates need in order to practise. We publish standards of proficiency for the nursing and midwifery professions as well as proficiencies for NMC approved post-registration programmes.



Through our [quality assurance \(QA\)](#) processes we check that

\_\_\_\_\_

# Legislative framework

## Our legislation

Article 15(1) of the Order requires the Council to establish standards of education and training which are necessary to achieve the standards of proficiency. The standards for pre-registration midwifery programmes are established under the provision of Article 15(1) of the Order.

## Lead midwife for education

Rule 6(1)(a)(ii) and Rule 6(3) of the Nursing and Midwifery Council (Education, Registration and Registration Appeals) Rules 2004<sup>2</sup> establish the requirements of the [lead midwife for education](#).

Information about the role of the lead midwife for education can be found [on page 22](#).

## EU legislation

These standards comply with Directive 2005/36/EC of the European parliament and of the council on the recognition of professional qualifications (as amended) as outlined in [Annexe 1](#) of this document.



<sup>2</sup> [The Nursing and Midwifery Council \(Education, Registration and Registration Appeals\) Rules 2004 \(SI 2004/1767\)](#)

# Standards for pre-registration midwifery programmes

AEIs have ownership, overall responsibility and accountability for education programmes. We expect AEIs to work in partnership with their practice learning partners on the development, delivery and management of pre-registration midwifery programmes. Pre-registration midwifery programmes may offer various routes to registration.

The *Standards framework for nursing and midwifery education*, the *Standards for student supervision and assessment* and the *Standards for pre-registration midwifery programmes* provide the overall regulatory framework, which enables AEIs and practice learning partners to design programmes that meet our requirements while at the same time allowing for local flexibility, innovation and variability within individual curricula.

Midwifery curricula must include the outcomes set out in the *Standards of proficiency for midwives*, which include the content and competencies specified in relevant EU legislation. Students will learn and be assessed in a range of environments including AEI and practice learning partner settings and through [simulation](#).

The involvement of women, partners, families and advocacy groups in the design, development, delivery and evaluation of midwifery curricula is intended to promote public confidence in the education of future midwives. We therefore expect the use of supportive evidence and engagement from people who have experienced care by midwives to inform programme design, development, delivery and evaluation.

On successful completion of an NMC approved programme students will be eligible to apply to the NMC to register as a midwife.



# The student journey

.....

.....

.....

.....

.....

# 1. Selection, admission and progression

## AEIs must:

---

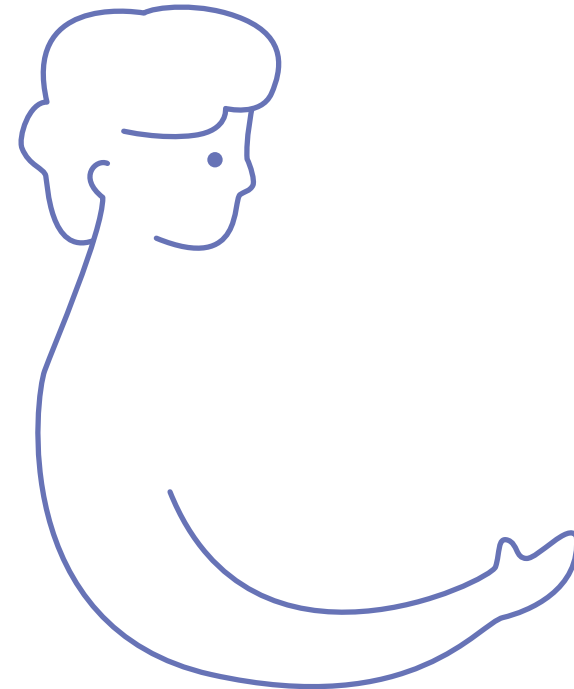
- 1.1 appoint a lead midwife for education who is responsible for midwifery education in the AEI
- 1.2 inform the NMC of the name of the lead midwife for education
- 1.3 ensure recognition of prior learning is not permitted for pre-registration midwifery programmes

## AEIs together with practice learning partners must:

---

- 1.4 ensure selection, admission and progression comply with the NMC *Standards framework for nursing and midwifery education*
- 1.5 confirm on entry to the programme that students:
  - 1.5.1 enrolled on pre-registration midwifery programmes are appropriately compliant with Article 40(2) of Directive 2005/36/EC regarding general education length and/or nursing qualification as outlined in [Annexe 1](#) of this document
  - 1.5.2 demonstrate an understanding of the role and scope of practice of the midwife
  - 1.5.3 demonstrate values in accordance with [the Code](#)

- 1.5.4 have capability to learn behaviours in accordance with the Code
- 1.5.5 have capability to develop numeracy skills required to meet programme outcomes
- 1.5.6 can demonstrate proficiency in English language
- 1.5.7 have capability in literacy to meet programme outcomes
- 1.5.8 have capability to develop digital and technological literacy to meet programme outcomes





1.6 support students throughout the programme in continuously

---

---

---

---

---

## 2. Curriculum

### AEIs together with practice learning partners must:

---

- 2.1 confirm programmes comply with the NMC *Standards framework for nursing and midwifery education*
- 2.2 confirm programmes comply with the NMC *Standards for student supervision and assessment*
- 2.3 ensure programme learning outcomes reflect the NMC *Standards of proficiency for midwives*
- 2.4 involve women, partners, families and advocacy groups in the design, development, delivery and evaluation of programmes
- 2.5 ensure that programmes delivered in Wales comply with legislation which supports use of the Welsh language
- 2.6 design and deliver programmes that support students and provide relevant and ongoing exposure to midwifery practice
- 2.7 ensure technology-enhanced and simulated learning opportunities are used effectively and proportionately to support learning and assessment, including where practice scenarios occur infrequently and a proficiency is required
- 2.8 design curricula that provide an equal balance of 50 percent theory and 50 percent practice learning, using a range of learning and teaching strategies, and
- 2.9 ensure NMC approved pre-registration midwifery education programmes are of sufficient length to enable students to meet the NMC *Standards of proficiency for midwives* and respective programme outcomes, and comply with Article 40 (1) and satisfy Article 41(1) of Directive 2005/36/EC (see Annexe 1) by meeting the following criteria:
  - 2.9.1 full time education and training as a midwife is a minimum of three years and 4,600 hours, or
  - 2.9.2 where a student is already registered with the NMC as a Registered nurse: first level (adult), full-time education and training as a midwife shall be a minimum of two years and 3,600 hours, or
  - 2.9.3 where a student is already registered with the NMC as a Registered nurse: first level (adult), full-time education and training as a midwife shall be a minimum of 18 months and 3,000 hours, and in order for the qualification to be recognised in EU member states it must be followed by a year of professional midwifery practice.

# 3. Practice learning

## AEIs together with practice learning partners must:

---

- 3.1 provide practice learning opportunities that enable students to develop and meet the NMC *Standards of proficiency for midwives*
- 3.2 ensure students experience the role and scope of the midwife enabling them to provide holistic care to women, newborn infants, partners and families
- 3.3 provide students with learning opportunities to enable them to achieve the proficiencies related to interdisciplinary and multiagency team working
- 3.4 provide students with learning opportunities to enable them to achieve the proficiencies related to continuity of midwifery carer across the whole continuum of care for all women and newborn infants
- 3.5 provide students with learning opportunities to experience midwifery care for a diverse population across a range of settings, including midwifery led services
- 3.6 provide learning opportunities that enable students to develop the required knowledge, skills and behaviours needed when caring for women and newborn infants when complication and additional care needs arise, including as they relate to physical, psychological, social, cultural and spiritual factors
- 3.7 take account of students' individual needs and personal circumstances when allocating their practice learning opportunities, including making [reasonable adjustments](#) for students with disabilities
- 3.8 ensure students experience the range of hours expected of practising midwives, and
- 3.9 ensure students are [supernumerary](#).



# 4. Supervision and assessment

## AEIs together with practice learning partners must:

- 4.1 provide support, supervision, learning opportunities and assessment that complies with the NMC *Standards framework for nursing and midwifery education*
- 4.2 provide support, supervision, learning opportunities and assessment that complies with the NMC *Standards for student supervision and assessment*
- 4.3 ensure throughout the programme that students meet the NMC *Standards of proficiency for midwives* and programme outcomes

- 4.7 ensure all proficiencies are recorded in an ongoing record of achievement, which must demonstrate the achievement of proficiencies and skills set out in the NMC *Standards of proficiency for midwives*, and
- 4.8 ensure the knowledge and skills for midwives set out in Article 40(3) and the activities of a midwife specified in Article 42 of Directive 2005/36/EC have been met as outlined in [Annexe 1](#) of this document.

# 5. Quali cation to be awarded



AEIs together with practice learning partners must:

---

- 5.1 ensure the minimum award for a pre-registration midwifery programme is a bachelor's degree, and
- 5.2 notify students during and before completion of the programme that they have [five years](#) to apply to register with the NMC if they wish to rely on this qualification<sup>3</sup>. In the event of a student failing to register their qualification within five years they will have to undertake additional education and training or gain such experience as specified in our standards.

# Annexe 1

Extract from Directive 2005/36/EC of the European parliament and of the council on the recognition of professional qualifications (as amended)

## Article 40

---

### The training of midwives

1. The training of midwives shall comprise a total of at least:
  - a. specific full-time training as a midwife comprising at least three years of theoretical and practical study (route I) comprising at least the programme described in Annex V, point 5.5.1, or
  - b. specific full-time training as a midwife of 18 months' duration (route II), comprising at least the study programme described in Annex V, point 5.5.1, which was not the subject of equivalent training of nurses responsible for general care.

The Member States shall ensure that institutions providing midwife training are responsible for coordinating theory and practice throughout the programme of study.

The Commission shall be empowered to adopt delegated acts in accordance with Article 57c concerning the amendment of the list set out in point 5.5.1 of Annex V with a view to adapting it to scientific and technical progress.

The amendments referred to in the third sub-paragraph shall not entail an amendment of existing essential legislative principles in Member States regarding the structure of professions as regards training and conditions of access by natural persons. Such amendments shall respect the responsibility of the Member States for the organisation of education systems, as set out in Article 165(1) TFEU.

2. Admission to training as a midwife shall be contingent upon one of the following conditions:
  - a. completion of at least 12 years of general school education or possession of a certificate attesting success in an examination, of an equivalent level, for admission to a midwifery school for route I;
  - b. possession of evidence of formal qualifications as a nurse responsible for general care referred to in point 5.2.2 of Annex V for route II.



Extract from Directive 2005/36/EC of the European  
Parliament and of the Council on the recognition of  
professional qualifications (as amended)

## Article 41

---

Procedures for the recognition of evidence of formal  
qualifications as a midwife

1.



Extract from Directive 2005/36/EC of the European  
parliament and of the council on the recognition of  
professional qualifications

.....

Extract from Directive 2005/36/EC of the European parliament and of the council on the recognition of professional qualifications (as amended)

## ANNEX V Recognition on the basis of coordination of the minimum training conditions

---

### V.5. MIDWIFE

#### 5.5.1. Training programme for midwives (Training types I and II)

The training programme for obtaining evidence of formal qualifications in midwifery consists of the following two parts:

#### A. Theoretical and technical instruction

##### a. General subjects

- Basic anatomy and physiology
- Basic pathology
- Basic bacteriology, virology and parasitology
- Basic biophysics, biochemistry and radiology
- Paediatrics, with particular reference to new-born infants
- Hygiene, health education, preventive medicine, early diagnosis of diseases
- Nutrition and dietetics, with particular reference to women, new-born and young babies
- Basic sociology and socio-medical questions
- Basic pharmacology
- Psychology
- Principles and methods of teaching

- Health and social legislation and health organisation
  - Professional ethics and professional legislation
  - Sex education and family planning
  - Legal protection of mother and infant
- #### b. Subjects specific to the activities of midwives
- Anatomy and physiology
  - Embryology and development of the foetus
  - Pregnancy, childbirth and puerperium
  - Gynaecological and obstetrical pathology
  - Preparation for childbirth and parenthood, including psychological aspects
  - Preparation for delivery (including knowledge and use of technical equipment in obstetrics)
  - Analgesia, anaesthesia and resuscitation
  - Physiology and pathology of the new-born infant
  - Care and supervision of the new-born infant
  - Psychological and social factors

## B. Practical and clinical training

This training is to be dispensed under appropriate supervision:

- Advising of pregnant women, involving at least 100 pre-natal examinations.
- Supervision and care of at least 40 pregnant women.
- Conduct by the student of at least 40 deliveries; where this number cannot be reached owing to the lack of available women in labour, it may be reduced to a minimum of 30, provided that the student assists with 20 further deliveries.
- Active participation with breech deliveries. Where this is not possible because of lack of breech deliveries, practice may be in a simulated situation.
- Performance of episiotomy and initiation into suturing. Initiation shall include theoretical instruction and clinical practice. The practice of suturing includes suturing of

aacig oy4.6 (n)0.5 (i)4a iapher,2pr8(g ol )TDeactris(i)6 (s i)4s5(. )T EMC /Lbl AMCID 11 BDC1 (ac)-14.1 (4.1 (mbe)3.8d)3.1 (u)2.2 (c)-2.1 (u)4.4 (l)1.6 .6

# Glossary

**Approved education institutions (AEIs)** : the status awarded by the NMC to an institution, or part of an institution, or combination of institutions that work in partnership with practice placement and/or work placed learning providers. AEIs will have provided us with assurance that they are accountable and capable of delivering NMC approved education programmes.

**Designated midwife substitute:** must be a midwife who holds registration with the NMC. Their role is to sign declarations of health and character when the lead midwife for education is not available to do so.

Educators:

---

---

**Reasonable adjustments :** changes in the way services are offered to prevent students with disabilities from being placed at a substantial disadvantage, ensuring a fair and equal chance of accessing services as set out in equalities and human rights legislation.

**Simulation :** when used for learning and/or assessment is an artificial representation of a real world practice scenario that supports midwifery student development through experiential learning with the opportunity for repetition, feedback, evaluation and reflection. Effective simulation facilitates safety by enhancing knowledge, behaviours and skills.

**Student :** any individual enrolled onto an NMC approved education programme whether full time or less than full time.

**Supernumerary :** students in practice or work placed learning must be supported to learn without being counted as part of the staffing required for safe.6 (f)29.4 (e.6s/T11\_1 Tf-c)3.9 (k)-27.1

# Information about the role of the lead midwife for education

The lead midwife for education is responsible for midwifery education in the relevant approved education institution (AEI) and is suitably qualified and experienced to lead and advise on matters relating to midwifery education. The lead midwife for education and their designated midwife substitute must be a midwife who holds registration with the Nursing and Midwifery Council (NMC).

We require an AEI to do the following:

- appoint a lead midwife for education who is responsible for midwifery education
- inform the NMC Council of the name of the lead midwife for education



